



QT 2010 PNEUMATIC 4"X7" TUBE SYSTEM TELLER & CUSTOMER UNIT, SYSTEM CONTROL DETAILS

QT 2010 TELLER (OPERATOR) UNIT DETAILS



TELLER (OPERATOR) CONTROL PANEL

POWER BUTTON:

The "POWER" BUTTON ACTIVATES/DEACTIVATES THE COMPLETE SYSTEM. WHEN THE "POWER" SWITCH IS PRESSED MOMENTARILY, POWER IS APPLIED TO THE COMPLETE SYSTEM. THE "POWER" INDICATOR WILL ILLUMINATE WHEN ON AND EXTINGUISHES WHEN OFF.

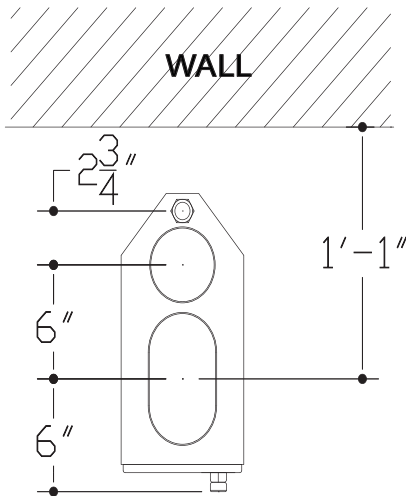
NOTE: The "POWER" button does NOT switch off 120VAC service to any component. Some components may remain Energized and/or Active when the system is "Off."

SEND BUTTON:

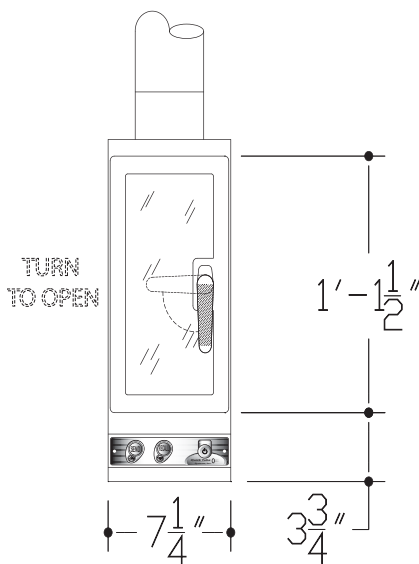
AFTER OPERATOR PLACES ITEMS IN CARRIER - CARRIER IS THEN PLACED ON THE LANDING PAD IN THE TELLER(OPERATOR) UNIT. THE OPERATOR THEN CLOSES THE UNIT DOOR AND PASSES THE SEND BUTTON, THE CARRIER IS SENT TO THE CUSTOMER.

RECALL BUTTON:

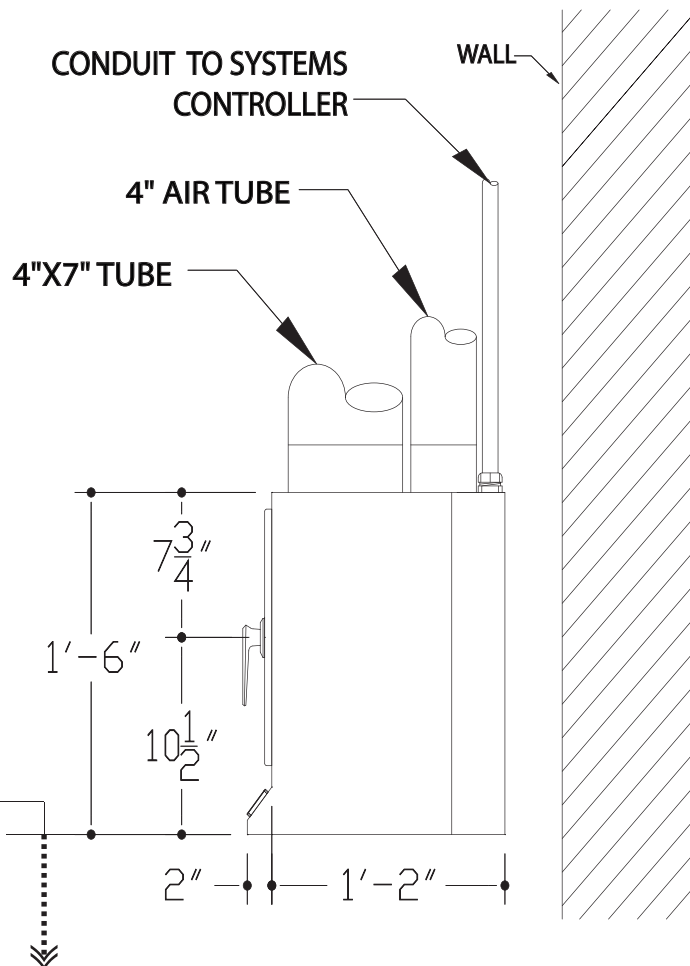
WHEN RECALL BUTTON IS PRESSED THE CARRIER IS BROUGHT TO THE TELLER(OPERATOR) UNIT FROM THE UNIT.



PLAN VIEW



FRONT VIEW



SIDE VIEW

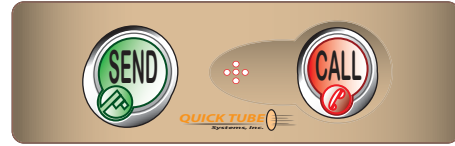
DIMENSIONS IN FEET-INCHES



21000-002

PART NO. 832-717-0549
©2010 HUFFSMITH KERRY/FILE #100
TOMBALL, TX 77375

FILE #: 51000-055 REV. 1.0



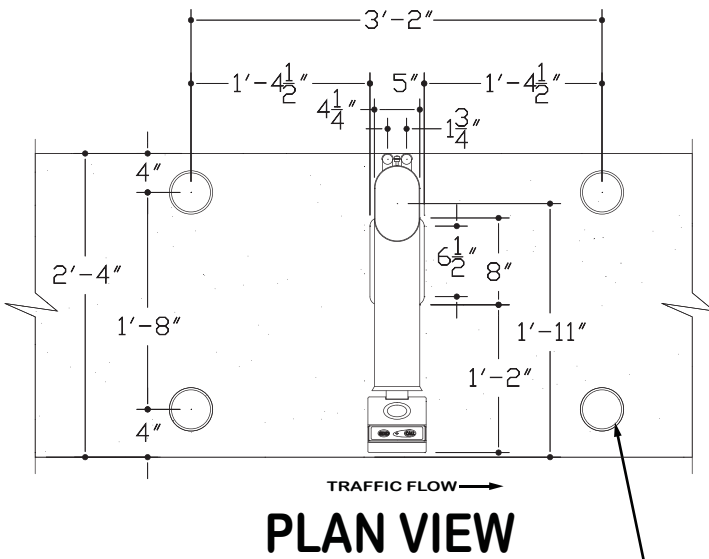
CUSTOMER CONTROL PANEL

SEND BUTTON:

AFTER CUSTOMER PLACES ITEMS IN CARRIER - CARRIER IS THEN PLACED ON LANDING PAD. THE CUSTOMER PASSES THE SEND BUTTON AND CARRIER IS SENT TO THE OPERATOR.

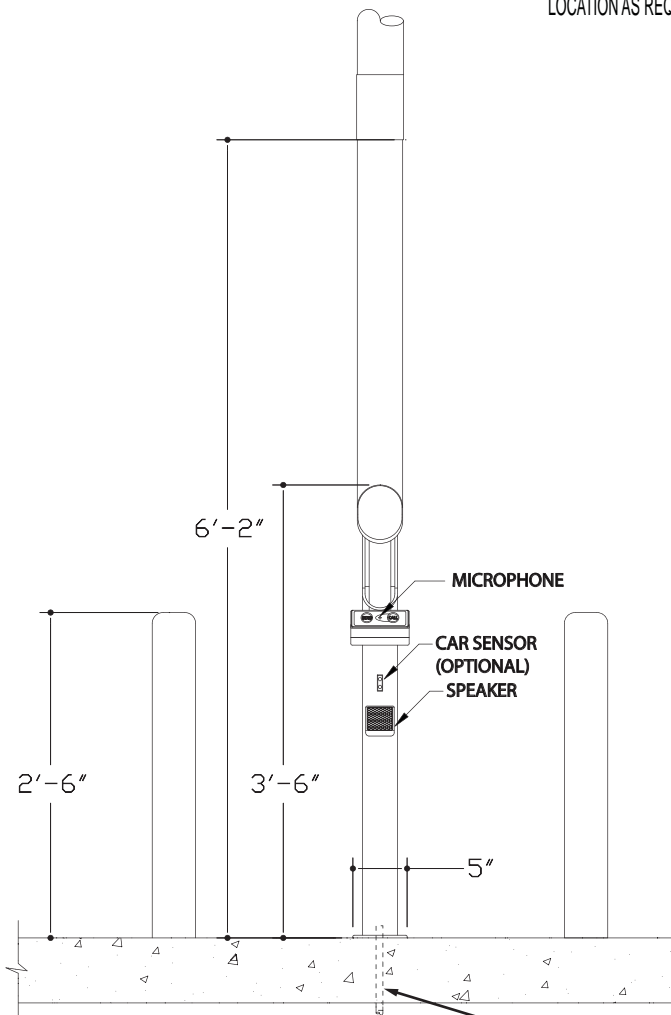
CALL BUTTON:

WHEN CUSTOMER ARRIVES AT THE CUSTOMER UNIT, THE CUSTOMER MAY PRESS THE CALL BUTTON ACTIVATING AN AUDIO CHIME AT THE OPERATOR STATION. AUDIO IS THEN ACTIVATED THROUGH THE AUDIO CONSOLE FOR CONVERSATION.

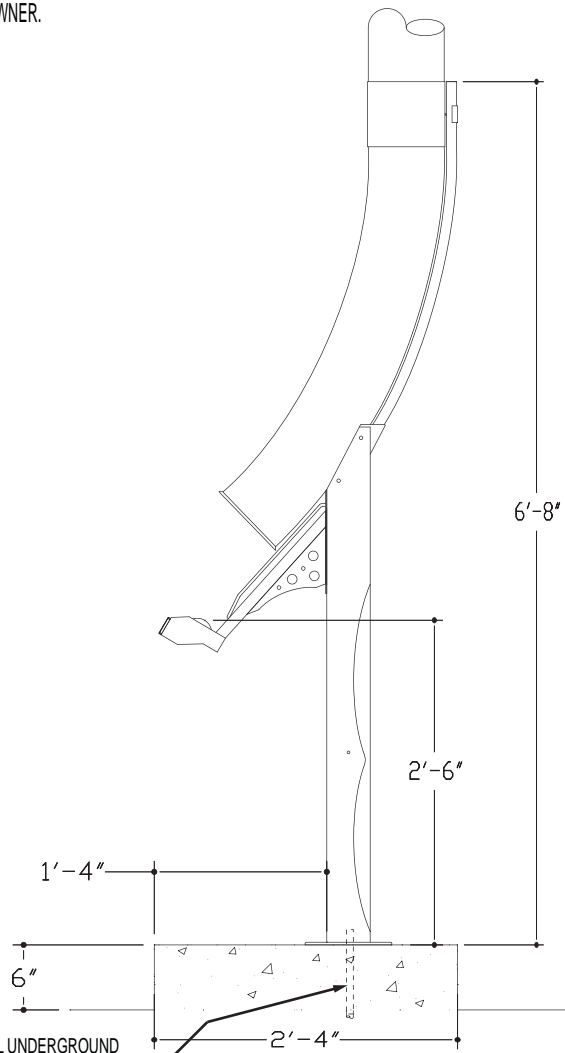


PLAN VIEW

(4) BOLLARDS RECOMMENDED-SIZE AND LOCATION AS REQUIRED BY OWNER.



FRONT VIEW



SIDE VIEW

3/4" CONDUIT FOR OPTIONAL UNDERGROUND ROUTING OF LOW VOLTAGE POWER, CONTROL, AUDIO AND OPTIONAL CCTV CABLES.

DIMENSIONS IN FEET-INCHES



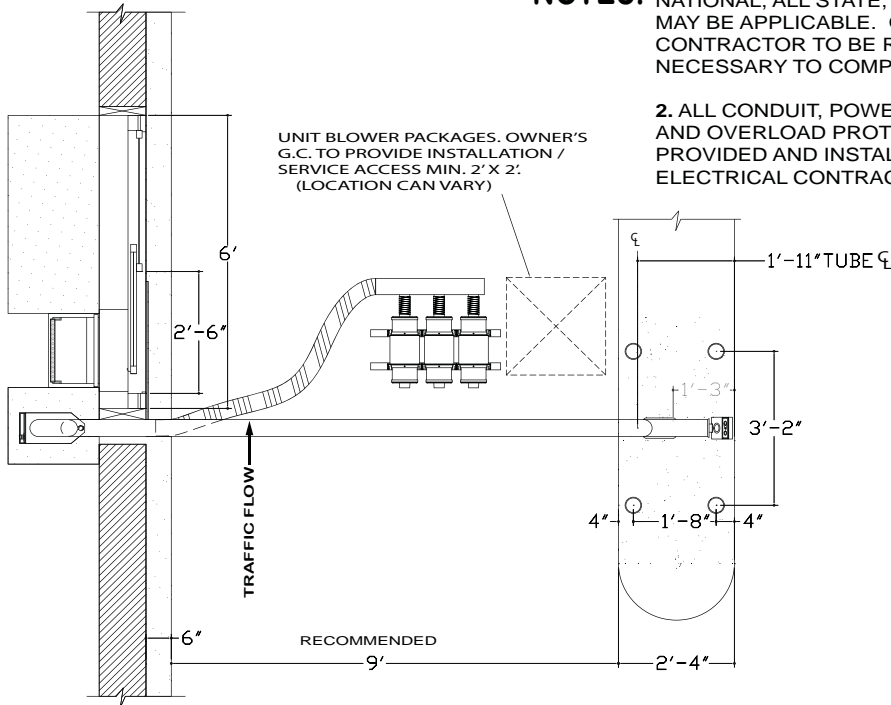
THIRD ANGLE PROJECTION



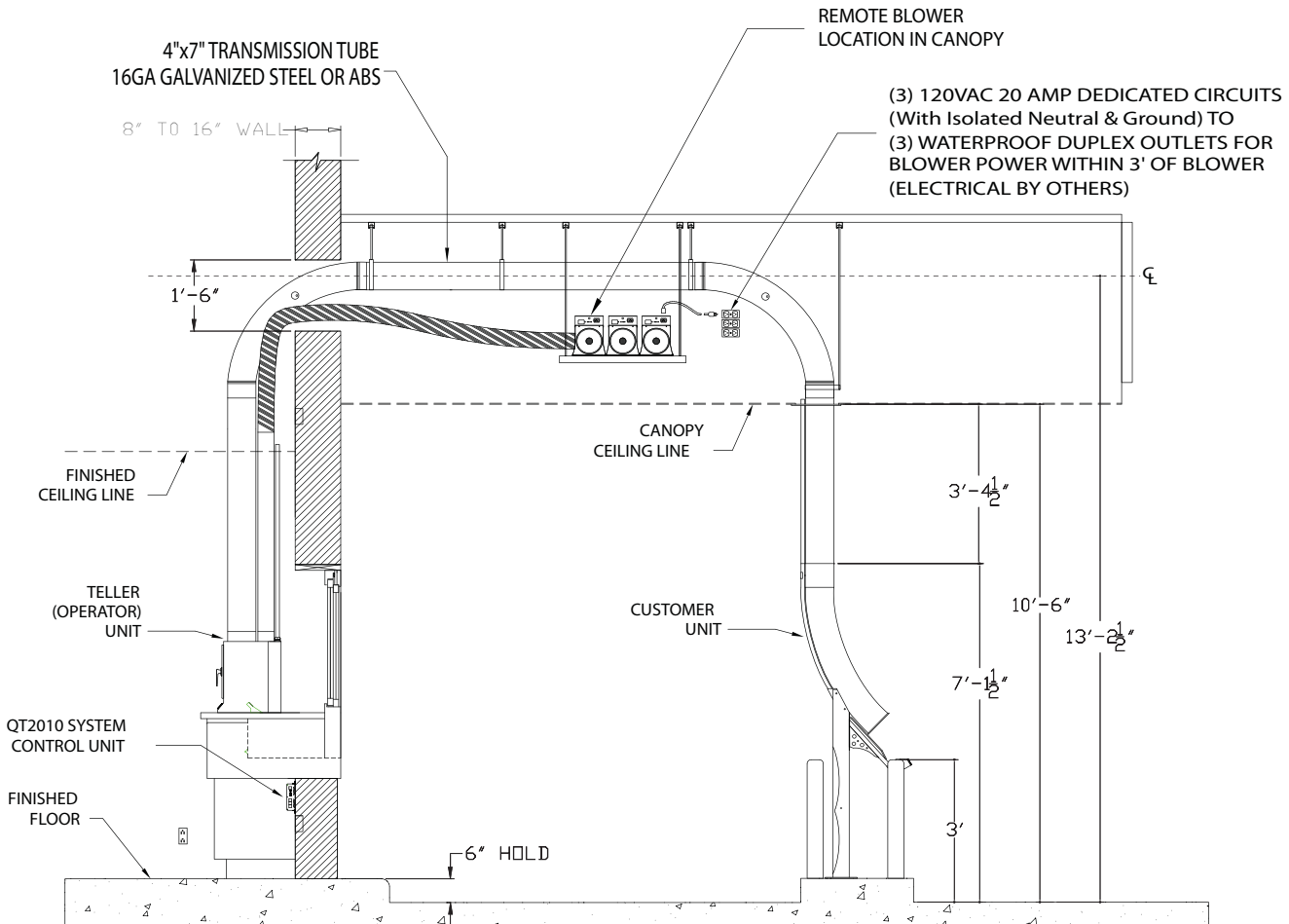
QT 2010 PNEUMATIC 4"X7" TUBE SYSTEM TYPICAL DRIVE-THRU INSTALLATION (TRANSACTION DRAWER AND 6' SLIDER WINDOW)

NOTES: 1. ALL WORK AND MATERIALS SHALL CONFORM TO THE NATIONAL, ALL STATE, AND ELECTRICAL CODES WHICH MAY BE APPLICABLE. OWNER'S ELECTRICAL CONTRACTOR TO BE RESPONSIBLE FOR ANY CHANGES NECESSARY TO COMPLY WITH THESE CODES.

2. ALL CONDUIT, POWER WIRES, JUNCTION BOXES, AND OVERLOAD PROTECTION DEVICES, ARE TO BE PROVIDED AND INSTALLED BY THE OWNER'S ELECTRICAL CONTRACTOR.



PLAN VIEW



SECTION/ELEVATION

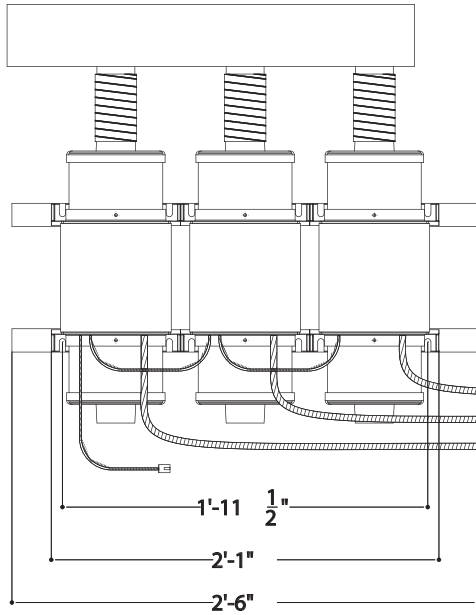
DIMENSIONS IN FEET-INCHES





QT 2010 BLOWER PACK MODULE DETAILS & SYSTEM CONTROL SCHEMATIC

NOTE: (3) 120 VAC, 20AMP, 60 Hz, SINGLE-PHASE DEDICATED BRANCH CIRCUITS (WITH ISOLATED NEUTRAL & GND).
 (3) WATERPROOF DUPLEX OUTLETS FOR BLOWER POWER WITH 3' OF BLOWER LOCATION.
 (ELECTRICAL BY OTHERS)

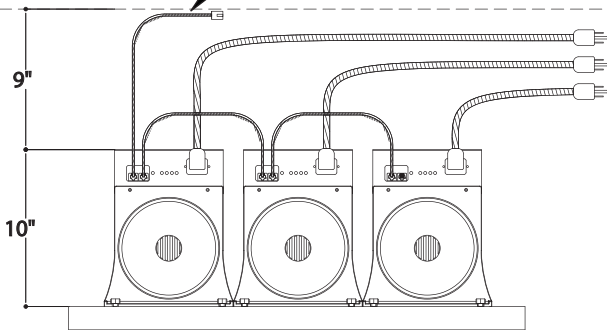


PLAN VIEW

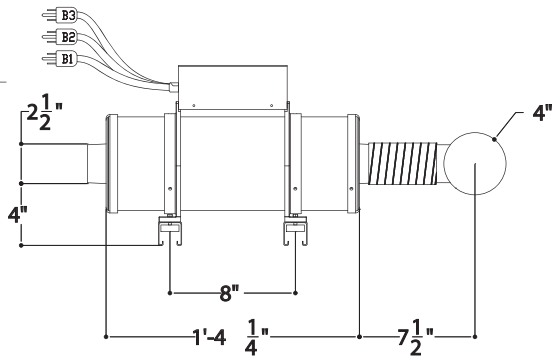
(3) TYPE SO, 14AWG (3) CONNECTOR CORD (3' -0" LONG)



(2) RJ45 INTERCONNECTING PLUG (FIELD WIRING) CAT5/5E CABLE. (COLOR CODED "BLACK")



FRONT VIEW

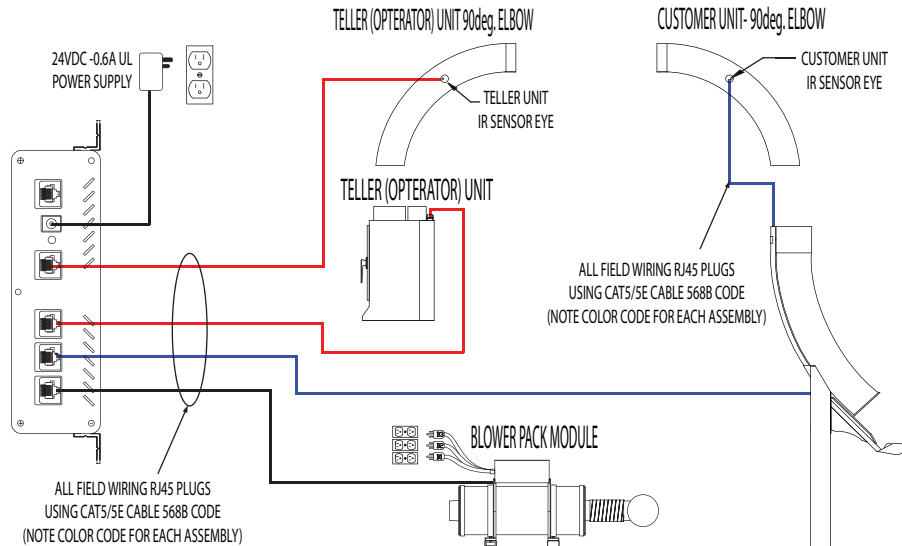


SIDE VIEW

DIMENSIONS IN FEET-INCHES



SYSTEM CONTROLLER
 P/N: 21000-048



SYSTEM CONTROL SCHEMATIC